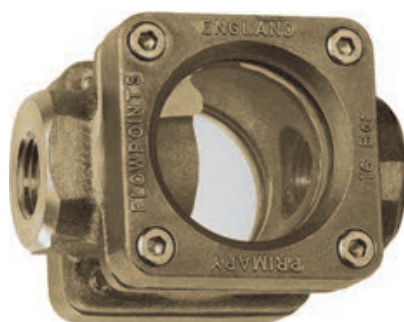


# FH, ON, OW, WO1

## Индикаторы потока со смотровыми стеклами

### GHM MESSTECHNIK



## Технические характеристики

Архангельск (8182)63-90-72	Иваново (4932)77-34-06	Липецк (4742)52-20-81	Пенза (8412)22-31-16	Ставрополь (8652)20-65-13
Астана (7172)727-132	Ижевск (3412)26-03-58	Магнитогорск (3519)55-03-13	Пермь (342)205-81-47	Сургут (3462)77-98-35
Астрахань (8512)99-46-04	Иркутск (395)279-98-46	Москва (495)268-04-70	Ростов-на-Дону (863)308-18-15	Тверь (4822)63-31-35
Барнаул (3852)73-04-60	Казань (843)206-01-48	Мурманск (8152)59-64-93	Рязань (4912)46-61-64	Томск (3822)98-41-53
Белгород (4722)40-23-64	Калининград (4012)72-03-81	Набережные Челны (8552)20-53-41	Самара (846)206-03-16	Тула (4872)74-02-29
Брянск (4832)59-03-52	Калуга (4842)92-23-67	Нижний Новгород (831)429-08-12	Санкт-Петербург (812)309-46-40	Тюмень (3452)66-21-18
Владивосток (423)249-28-31	Кемерово (3842)65-04-62	Новокузнецк (3843)20-46-81	Саратов (845)249-38-78	Ульяновск (8422)24-23-59
Волгоград (844)278-03-48	Киров (8332)68-02-04	Новосибирск (383)227-86-73	Севастополь (8692)22-31-93	Уфа (347)229-48-12
Вологда (8172)26-41-59	Краснодар (861)203-40-90	Омск (3812)21-46-40	Симферополь (3652)67-13-56	Хабаровск (4212)92-98-04
Воронеж (473)204-51-73	Красноярск (391)204-63-61	Орел (4862)44-53-42	Смоленск (4812)29-41-54	Челябинск (351)202-03-61
Екатеринбург (343)384-55-89	Курск (4712)77-13-04	Оренбург (3532)37-68-04	Сочи (862)225-72-31	Череповец (8202)49-02-64
				Ярославль (4852)69-52-93

Киргизия (996)312-96-26-47    Казахстан (772)734-952-31    Таджикистан (992)427-82-92-69

<http://ghm.nt-rt.ru> || [gmg@nt-rt.ru](mailto:gmg@nt-rt.ru)

# Flow Indicator FH-...GR



- No moving parts internally
- Installation location as desired
- For heavily soiled or coloured fluids
- Double-sided large-surface window
- Natural glass

### Characteristics

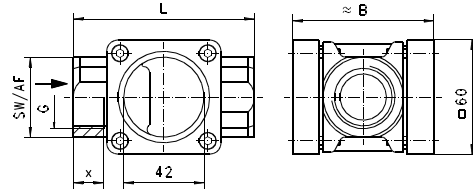
Devices made from solid red bronze, where the medium can be visually examined through the sight glass (fluid level, colour, bubbles,...).

### Technical data

<b>Nominal width</b>	DN 15..25
<b>Process connection</b>	female thread G 1/2..G 1
<b>Q<sub>max.</sub></b>	G 1/2 - 25 l/min G 3/4 - 45 l/min G 1 - 65 l/min
<b>Pressure resistance</b>	PN 16 bar
<b>Medium temperature</b>	0..100 °C water -20..+200 °C oils
<b>Ambient temperature</b>	-20..+100 °C
<b>Materials medium-contact</b>	Rg 5, CW614N, soda lime glass, Klingsil C4400
<b>Medium</b>	water, oils
<b>Weight</b>	see table "Dimensions and weights"
<b>Installation location</b>	as desired

### Dimensions and weights

G	Types	L	B	SW	X	Weight kg
G 1/2	FH-015GR	85	68	38	14	1.20
G 3/4	FH-020GR					1.10
G 1	FH-025GR	95	74	42	16	1.25



### Ordering code

FH -  1.  2.  3.  
G R

1. Nominal width	
015	DN 15 - G 1/2
020	DN 20 - G 3/4
025	DN 25 - G 1
2. Process connection	
G	female thread
3. Connection material	
R	red bronze

## Flow Indicator ON-...GM



- No moving parts internally
- For heavily soiled or coloured fluids
- Natural glass

### Characteristics

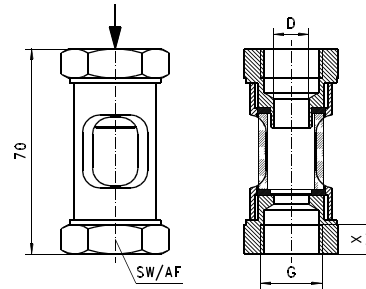
Devices made from solid brass, where the medium enters from above, and so can be visually examined through the sight glass (colour, bubbles, amount...). The device has a drip nozzle for the inspection of small flow rates.

### Technical data

<b>Nominal width</b>	DN 8..15
<b>Process connection</b>	female thread G 1/4..G 1/2
<b>Q<sub>max.</sub></b>	G 1/4 - 15 l/min G 3/8 - 20 l/min G 1/2 - 40 l/min
<b>Pressure resistance</b>	PN 6 bar
<b>Medium temperature</b>	-20..+70 °C
<b>Ambient temperature</b>	-20..+70 °C
<b>Materials medium-contact</b>	CW614N pickled, natural glass
<b>Medium</b>	water, oils
<b>Weight</b>	see table "Dimensions and weights"
<b>Installation location</b>	vertical inwards flow from above; other installation arrangements without drip nozzle function.

### Dimensions and weights

G	Types	D	SW	X	Weight kg
G 1/4	ON-008GM	5	19	12	0.08
G 3/8	ON-010GM	8	27	11	0.16
G 1/2	ON-015GM	12	32	10	0.20



### Ordering code

ON -  1.  2.  3.  
ON -  G  M

1. Nominal width	
008	DN 8 - G 1/4
010	DN 10 - G 3/8
015	DN 15 - G 1/2
2. Process connection	
G	female thread
3. Connection material	
M	brass

# Flow Indicator OW-...GM



- No moving parts internally
- Installation location as desired
- For heavily soiled or coloured fluids
- Natural glass

### Characteristics

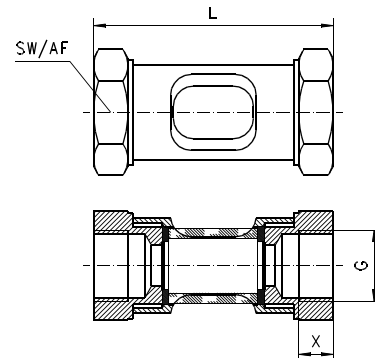
Devices made from solid brass, where the medium can be visually examined through the sight glass (fluid level, colour, bubbles,...).

### Technical data

<b>Nominal width</b>	DN 8..50
<b>Process connection</b>	female thread G 1/4..G 2
<b>Q<sub>max.</sub></b>	G 1/4 - 15 l/min G 3/8 - 20 l/min G 1/2 - 30 l/min G 1 - 90 l/min G 1 1/2 - 220 l/min G 2 - 250 l/min
<b>Pressure resistance</b>	PN 6 bar
<b>Medium temperature</b>	-20..+70 °C
<b>Ambient temperature</b>	-20..+70 °C
<b>Materials medium-contact</b>	DN 8..15 - CW614N pickled, natural glass DN 25..50 - CW614N nickelled, natural glass
<b>Medium</b>	water, oils
<b>Weight</b>	see table "Dimensions and weights"
<b>Installation location</b>	as desired

### Dimensions and weights

G	Types	L	SW	X	Weight kg
G 1/4	OW-008GM	70	19	12	0.08
G 3/8	OW-010GM		27	11	0.16
G 1/2	OW-015GM		32	10	0.20
G 1	OW-025GM	90	46	19	0.82
G 1 1/2	OW-040GM	130	60	23	1.40
G 2	OW-050GM	148	65	25	1.50



### Ordering code

OW - 1. 2. 3.  
OW -  **G** **M**

1. Nominal width	
008	DN 8 - G 1/4
010	DN 10 - G 3/8
015	DN 15 - G 1/2
025	DN 25 - G 1
040	DN 40 - G 1 1/2
050	DN 50 - G 2
2. Process connection	
G	female thread
3. Connection material	
M	brass

## Flow Indicator WO1-...GM / K



- No moving parts internally
- Internal wiper provides ability to clean the glass without removing the device.
- Installation location as desired
- For heavily soiled or coloured fluids
- 360 ° visibility

### Characteristics

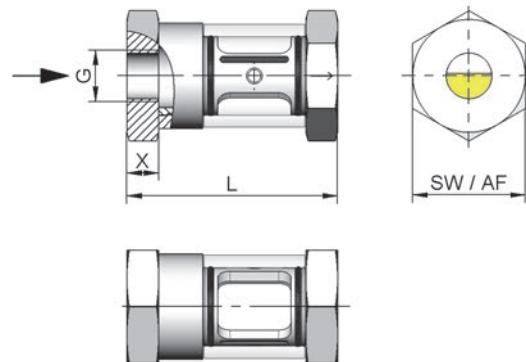
Devices made from solid brass or stainless steel, where the medium can be visually examined through the sight glass (fluid level, colour, bubbles, ...). A wiper makes it possible to clean the sight glass.

### Technical data

<b>Nominal width</b>	DN 8..40	
<b>Process connection</b>	female thread G 1/4..G 1 1/2	
<b>Q<sub>max.</sub></b>	G 1/4 - 15 l/min	
	G 3/8 - 20 l/min	
	G 1/2 - 30 l/min	
	G 3/4 - 60 l/min	
	G 1 - 90 l/min	
	G 1 1/4 - 150 l/min	
	G 1 1/2 - 220 l/min	
<b>Pressure resistance</b>	PN 16 bar	
<b>Medium temperature</b>	-20..+100 °C	
<b>Ambient temperature</b>	-20..+70 °C	
<b>Materials medium-contact</b>	<i>Brass construction:</i> CW614N nickelled, borosilicate glass, NBR	<i>Stainless steel construction:</i> 1.4305, borosilicate glass, FKM
<b>Medium</b>	water, oils	
<b>Weight</b>	see table "Dimensions and weights"	
<b>Installation location</b>	as desired	

### Dimensions and weights

G	Types	L	SW	X	Weight kg
G 1/4	WO1-008G.	71	36	9	0.3
G 3/8	WO1-010G.				
G 1/2	WO1-015G.	86	46	13	0.6
G 3/4	WO1-020G.	94		16	
G 1	WO1-025G.	104			
G 1 1/4	WO1-032G.	120	65	19	1.5
G 1 1/2	WO1-040G.	130		20	1.6



### Ordering code

WO1 -  1.  2.  3.  G

1. Nominal width	2. Process connection	3. Connection material
008 DN 8 - G 1/4	G female thread	M brass
010 DN 10 - G 3/8		K stainless steel
015 DN 15 - G 1/2		
020 DN 20 - G 3/4		
025 DN 25 - G 1		
032 DN 32 - G 1 1/4		
040 DN 40 - G 1 1/2		

### Options

- Wiper seal made from EPDM

Архангельск (8182)63-90-72 Иваново (4932)77-34-06 Липецк (4742)52-20-81 Пенза (8412)22-31-16 Ставрополь (8652)20-65-13  
 Астана (7172)727-132 Ижевск (3412)26-03-58 Магнитогорск (3519)55-03-13 Пермь (342)205-81-47 Сургут (3462)77-98-35  
 Астрахань (8512)99-46-04 Иркутск (395)279-98-46 Москва (495)268-04-70 Ростов-на-Дону (863)308-18-15 Тверь (4822)63-31-35  
 Барнаул (3852)73-04-60 Казань (843)206-01-48 Мурманск (8152)59-64-93 Рязань (4912)46-61-64 Томск (3822)98-41-53  
 Белгород (4722)40-23-64 Калининград (4012)72-03-81 Набережные Челны (8552)20-53-41 Самара (846)206-03-16 Тула (4872)74-02-29  
 Брянск (4832)59-03-52 Калуга (4842)92-23-67 Нижний Новгород (831)429-08-12 Санкт-Петербург (812)309-46-40 Тюмень (3452)66-21-18  
 Владивосток (423)249-28-31 Кемерово (3842)65-04-62 Новокузнецк (3843)20-46-81 Саратов (845)249-38-78 Ульяновск (8422)24-23-59  
 Волгоград (844)278-03-48 Киров (8332)68-02-04 Новосибирск (383)227-86-73 Севастополь (8692)22-31-93 Уфа (347)229-48-12  
 Вологда (8172)26-41-59 Краснодар (861)203-40-90 Омск (3812)21-46-40 Симферополь (3652)67-13-56 Хабаровск (4212)92-98-04  
 Воронеж (473)204-51-73 Красноярск (391)204-63-61 Орел (4862)44-53-42 Смоленск (4812)29-41-54 Челябинск (351)202-03-61  
 Екатеринбург (343)384-55-89 Курск (4712)77-13-04 Оренбург (3532)37-68-04 Сочи (862)225-72-31 Череповец (8202)49-02-64  
 Ярославль (4852)69-52-93

Киргизия (996)312-96-26-47 Казахстан (772)734-952-31 Таджикистан (992)427-82-92-69