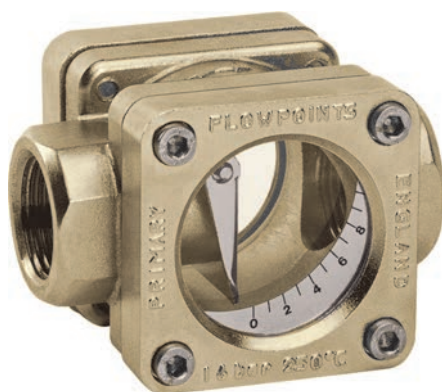


# FQ, FK, SK

## Индикаторы потока с заслонкой

### GHM MESSTECHNIK



## Технические характеристики

Архангельск (8182)63-90-72	Иваново (4932)77-34-06	Липецк (4742)52-20-81	Пенза (8412)22-31-16	Ставрополь (8652)20-65-13
Астана (7172)727-132	Ижевск (3412)26-03-58	Магнитогорск (3519)55-03-13	Пермь (342)205-81-47	Сургут (3462)77-98-35
Астрахань (8512)99-46-04	Иркутск (395)279-98-46	Москва (495)268-04-70	Ростов-на-Дону (863)308-18-15	Тверь (4822)63-31-35
Барнаул (3852)73-04-60	Казань (843)206-01-48	Мурманск (8152)59-64-93	Рязань (4912)46-61-64	Томск (3822)98-41-53
Белгород (4722)40-23-64	Калининград (4012)72-03-81	Набережные Челны (8552)20-53-41	Самара (846)206-03-16	Тула (4872)74-02-29
Брянск (4832)59-03-52	Калуга (4842)92-23-67	Нижний Новгород (831)429-08-12	Санкт-Петербург (812)309-46-40	Тюмень (3452)66-21-18
Владивосток (423)249-28-31	Кемерово (3842)65-04-62	Новокузнецк (3843)20-46-81	Саратов (845)249-38-78	Ульяновск (8422)24-23-59
Волгоград (844)278-03-48	Киров (8332)68-02-04	Новосибирск (383)227-86-73	Севастополь (8692)22-31-93	Уфа (347)229-48-12
Вологда (8172)26-41-59	Краснодар (861)203-40-90	Омск (3812)21-46-40	Симферополь (3652)67-13-56	Хабаровск (4212)92-98-04
Воронеж (473)204-51-73	Красноярск (391)204-63-61	Орел (4862)44-53-42	Смоленск (4812)29-41-54	Челябинск (351)202-03-61
Екатеринбург (343)384-55-89	Курск (4712)77-13-04	Оренбург (3532)37-68-04	Сочи (862)225-72-31	Череповец (8202)49-02-64

Киргизия (996)312-96-26-47    Казахстан (772)734-952-31    Таджикистан (992)427-82-92-69

<http://ghm.nt-rt.ru> || [gmg@nt-rt.ru](mailto:gmg@nt-rt.ru)

### Flow Indicator FQ-...GR



- High temperature resistance
- Double-sided large-surface window
- Natural glass
- Display of flow rate

#### Characteristics

Mechanical flow indicator for fluid media. A stainless steel flap in the area of flow is lifted by the volume flow, and indicates the present flow rate.

#### Technical data

<b>Nominal width</b>	DN 15.0.25	
<b>Process connection</b>	female thread G 1/2..G 1	
<b>Display range</b>	2.5..65 l/min	for details see table "Ranges"
<b>Q<sub>max.</sub></b>	to 65 l/min	
<b>Pressure resistance</b>	PN 16 bar	
<b>Media temperature</b>	0..+100 °C water -20..+200 °C oil	
<b>Ambient temperature</b>	-20..+100 °C	
<b>Materials medium-contact</b>	Rg 5, CW614N, 1.4310, 1.4305, Soda lime glass, Klingersil C4400	
<b>Materials, non-medium-contact</b>	aluminium	
<b>Medium</b>	water (oil available on request)	
<b>Weight</b>	see table "Dimensions and weights"	
<b>Installation location</b>	Standard: Horizontal inwards flow from the left; optionally inwards flow from below, installation position affects the range.	

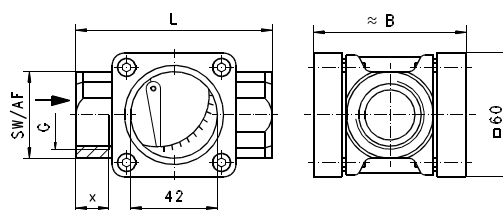
#### Ranges

Details in the table correspond to horizontal inwards flow with decreasing flow rate.

G	Display range l/min H <sub>2</sub> O	Q <sub>max.</sub> recommended	Types
G 1/2	2.1 - 17.0	25	FQ-015GR
G 3/4	2.1 - 20.0	45	FQ-020GR
G 1	2.1 - 24.0	65	FQ-025GR

#### Dimensions and weights

G	Types	L	B	SW	X	Weight kg
G 1/2	FQ-015GR	85	68	38	14	1.20
G 3/4	FQ-020GR					1.10
G 1	FQ-025GR	95	74	42	16	1.25



#### Scaling

Scale divisions 1 to 10.

Display range l/min H <sub>2</sub> O	Scale divisions									
	1	2	3	4	5	6	7	8	9	10
2.1 - 17	2.1	3.2	3.8	4.3	4.7	5.0	5.7	7.5	9.5	17.0
2.1 - 20	2.1	3.2	4.5	5.2	5.6	6.3	7.5	8.9	11.6	20.0
2.1 - 24	2.1	4.0	5.0	7.0	7.8	9.1	11.1	14.0	17.8	24.0

#### Ordering code

FQ -  1.  2.  3.  
**G** **R**

<b>1. Nominal width</b>	
015	DN 15 - G 1/2
020	DN 20 - G 3/4
025	DN 25 - G 1
<b>2. Process connection</b>	
G	female thread
<b>3. Connection material</b>	
R	red bronze



## Flow Indicator FK-...GR



- High temperature resistance
- Double-sided large-surface window
- Natural glass
- Visualisation of the flow rate

### Characteristics

Mechanical flow indicator for fluid media. A stainless steel flap in the area of flow is lifted by the volume flow, and indicates the present flow rate.

### Technical data

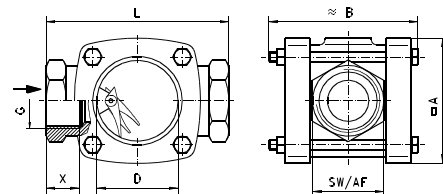
<b>Nominal width</b>	DN 15..50	
<b>Process connection</b>	female thread G 1/2..G 2	
<b>Display range</b>	5..250 l/min	for details see table "Ranges"
<b>Q<sub>max.</sub></b>	to 250 l/min	
<b>Pressure resistance</b>	PN 16 bar	
<b>Media temperature</b>	0..+100 °C water -20..+170 °C oil	
<b>Ambient temperature</b>	-20..+100 °C	
<b>Materials medium-contact</b>	cast tin bronze, grey iron, crown hardened glass, Flexicarb with nickel reinforcement, 1.4436, PA 6.6	
<b>Medium</b>	water (oils available on request)	
<b>Weight</b>	see table "Dimensions and weights"	
<b>Installation location</b>	Standard: Horizontal inwards flow from the left; optionally inwards flow from below, installation position affects the range.	

### Ranges

G	Approx. inflow rate l/min H <sub>2</sub> O	Q <sub>max.</sub> recommended	Types
G 1/2	5	25	FK-015GR
G 3/4	7	40	FK-020GR
G 1	14	60	FK-025GR
G 1 1/2	27	120	FK-040GR
G 2	56	250	FK-050GR

### Dimensions and weights

G	Types	L	A	B	D	SW	X	Weight kg
G 1/2	FK-015GR	90	60	74	40	36	14	0.9
G 3/4	FK-020GR							0.8
G 1	FK-025GR	110	76	95	49	43	18	1.6
G 1 1/2	FK-040GR	130	90	116	60	61	20	3.0
G 2	FK-050GR	170	114	138	80	74	25	5.9



### Ordering code

FK - 1. 2. 3.  
FK -  G  R

1. Nominal width	
015	DN 15 - G 1/2
020	DN 20 - G 3/4
025	DN 25 - G 1
040	DN 40 - G 1 1/2
050	DN 50 - G 2
2. Process connection	
G	female thread
3. Connection material	
R	cast tin bronze

Архангельск (8182)63-90-72	Иваново (4932)77-34-06	Липецк (4742)52-20-81	Пенза (8412)22-31-16	Ставрополь (8652)20-65-13
Астана (7172)727-132	Ижевск (3412)26-03-58	Магнитогорск (3519)55-03-13	Пермь (342)205-81-47	Сургут (3462)77-98-35
Астрахань (8512)99-46-04	Иркутск (395)279-98-46	Москва (495)268-04-70	Ростов-на-Дону (863)308-18-15	Тверь (4822)63-31-35
Барнаул (3852)73-04-60	Казань (843)206-01-48	Мурманск (8152)59-64-93	Рязань (4912)46-61-64	Томск (3822)98-41-53
Белгород (4722)40-23-64	Калининград (4012)72-03-81	Набережные Челны (8552)20-53-41	Самара (846)206-03-16	Тула (4872)74-02-29
Брянск (4832)59-03-52	Калуга (4842)92-23-67	Новокузнецк (831)429-08-12	Санкт-Петербург (812)309-46-40	Тюмень (3452)66-21-18
Владивосток (423)249-28-31	Кемерово (3842)65-04-62	Новокузнецк (3843)20-46-81	Саратов (845)249-38-78	Ульяновск (8422)24-23-59
Волгоград (844)278-03-48	Киров (8332)68-02-04	Новосибирск (383)227-86-73	Севастополь (8692)22-31-93	Уфа (347)229-48-12
Вологда (8172)26-41-59	Краснодар (861)203-40-90	Омск (3812)21-46-40	Симферополь (3652)67-13-56	Хабаровск (4212)92-98-04
Воронеж (473)204-51-73	Красноярск (391)204-63-61	Орел (4862)44-53-42	Смоленск (4812)29-41-54	Челябинск (351)202-03-61
Екатеринбург (343)384-55-89	Курск (4712)77-13-04	Оренбург (3532)37-68-04	Сочи (862)225-72-31	Череповец (8202)49-02-64
				Ярославль (4852)69-52-93

Киргизия (996)312-96-26-47    Казахстан (772)734-952-31    Таджикистан (992)427-82-92-69